



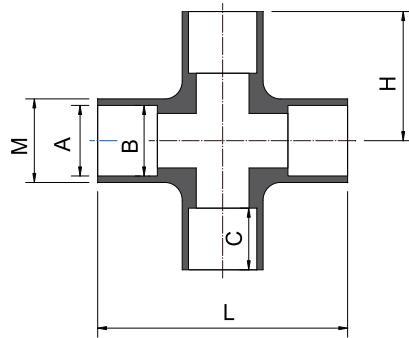
# UPVC / CPVC PIPE FITTING VALVE

## CROSS

(Soc\*Soc\*Soc\*Soc)

四通

(ANSI SCH80)



單位 (unit) : inch

Size	A	B	C	H	M	L	UPVC code no.	CPVC code no.
1/2	27/32	27/32	7/8	1-23/64	1-3/16	2-23/32	11-TZ1-08-0015	41-TZ1-08-0015
3/4	1-1/16	1-1/16	1	1-5/8	1-3/8	3-1/16	11-TZ1-08-0020	41-TZ1-08-0020
1	1-11/32	1-5/16	1-1/8	2-3/32	1-11/16	4-3/16	11-TZ1-08-0025	41-TZ1-08-0025
1-1/4	1-11/16	1-21/32	1-1/8	2-11/32	2-1/16	4-43/64	11-TZ1-08-0032	41-TZ1-08-0032
1-1/2	1-29/32	1-29/32	1-3/8	2-5/8	2-7/16	5-1/4	11-TZ1-08-0040	41-TZ1-08-0040
2	2-13/32	2-3/8	1-1/2	3	3-1/16	6	11-TZ1-08-0050	41-TZ1-08-0050
2-1/2	2-29/32	2-7/8	1-3/4	3-7/16	3-19/32	6-7/8	11-TZ1-08-0065	41-TZ1-08-0065
3	3-17/32	3-1/2	1-7/8	3-15/16	4-19/64	7-7/8	11-TZ1-08-0080	41-TZ1-08-0080
4	4-17/32	4-1/2	2-1/4	4-7/8	5-1/4	9-3/4	11-TZ1-08-0100	41-TZ1-08-0100
6	6-5/8	6-19/32	3	10-1/2	7-17/32	21	11-TZ1-08-0150	41-TZ1-08-0150
8	8-21/32	8-19/32	3-31/32	12-1/8	10-5/32	24-1/4	11-TZ1-08-0200	41-TZ1-08-0200
* 10	10-7/8	10-25/32	5-17/32	14-1/2	12	29	11-TZ1-08-0250	41-TZ1-08-0250
* 12	12-13/16	12-11/16	6-5/16	16-7/16	14-1/8	32-7/8	11-TZ1-08-0300	41-TZ1-08-0300
* 14	14-1/32	13-29/32	7	19-1/4	15-1/2	38-1/2	11-TZ1-08-0350	41-TZ1-08-0350
* 16	16-1/16	15-29/32	8-15/32	21-1/8	17-11/16	42-1/4	11-TZ1-08-0400	41-TZ1-08-0400
* 18	18-1/16	17-7/8	9	23-1/2	20	47	11-TZ1-08-0450	41-TZ1-08-0450
* 20	20-3/32	19-29/32	10	24-7/8	22-1/8	49-3/4	11-TZ1-08-0500	41-TZ1-08-0500
* 24	24-1/8	23-15/16	11-1/32	28-3/4	26-1/2	57-1/2	11-TZ1-08-0600	41-TZ1-08-0600

\*手工製品 (Fabricated)