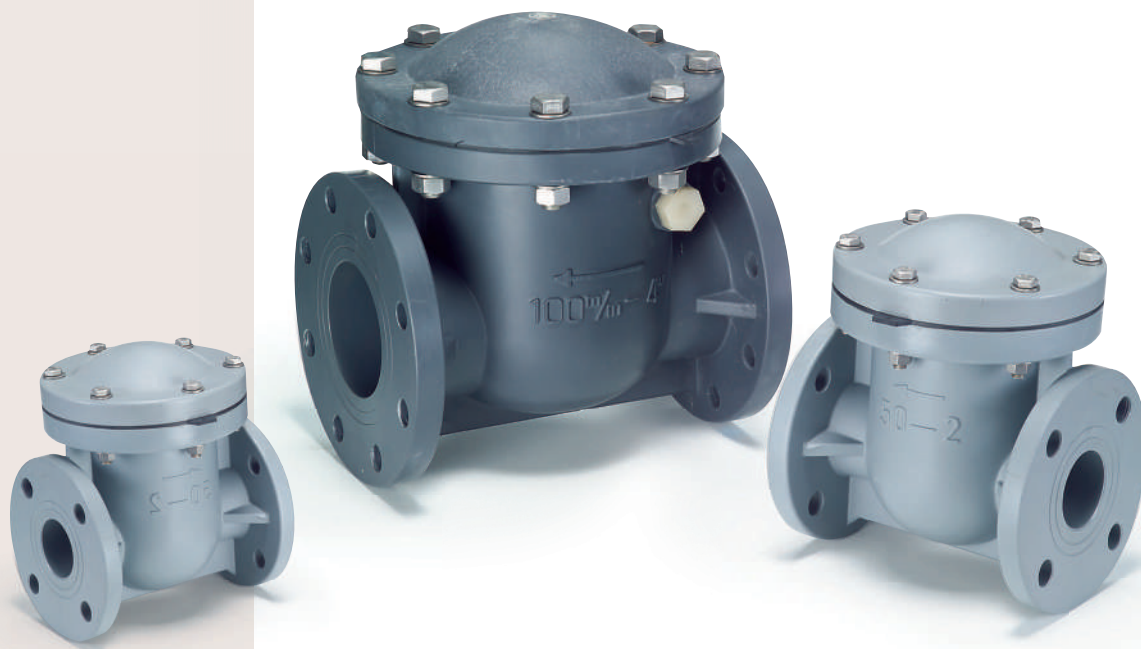




CHECK VALVE / HORIZONTAL TYPE



JW Series

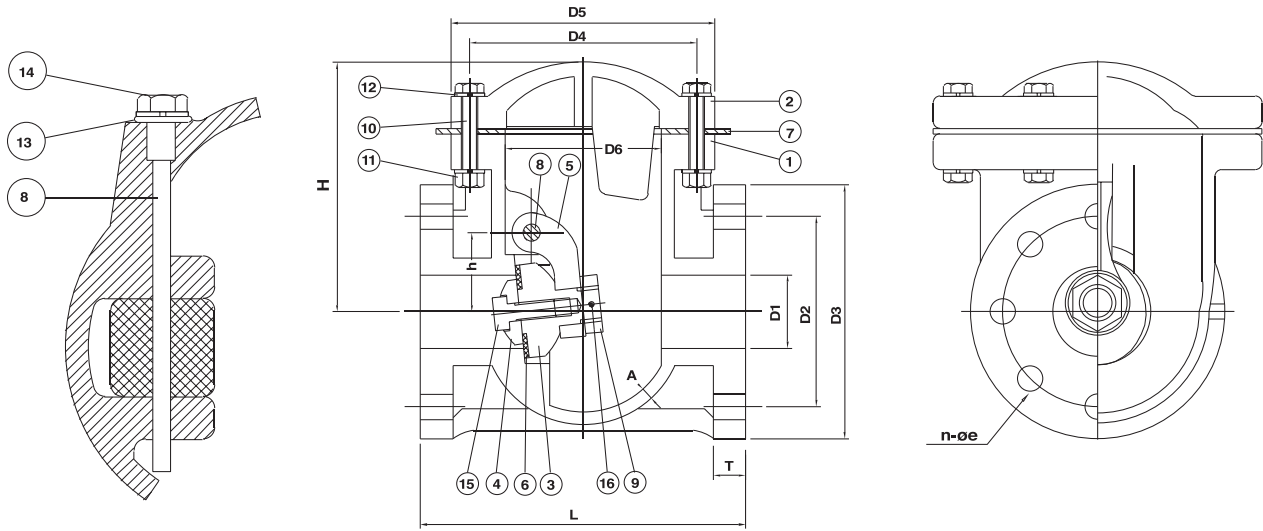
JW300 SIZE: 1"-8"

MATERIALS OF CONSTRUCTION

| No. | Parts | Pcs. | Materials | No. | Parts | Pcs. | Materials |
|-----|---------------------|------|---------------------------|-----|--------------|---|------------------------------------|
| 1 | Body | 1 | UPVC, PP, CPVC, PPG, PVDF | 9 | Disc Holder | 1 | PP,PVDF |
| 2 | Bonnet | 1 | UPVC, CPVC, PPG, PVDF | 10 | Bolts | 6...DN15-50 8...DN65-125 10...DN150 12...DN200 | SUS304 |
| 3 | Disc | 1 | UPVC, PP, CPVC, PPG, PVDF | 11 | Nuts | | SUS304 |
| 4 | Sheet Gasket Holder | 1 | UPVC, PP, CPVC, PPG, PVDF | 12 | Washers | | SUS304 |
| 5 | Swing Arms | 1 | UPVC, PP, CPVC, PPG, PVDF | 13 | O'ring | 1 | EPDM,VITON |
| 6 | Disc Gasket | 1 | EPDM, VITON , TEFLON | 14 | Shaft Holder | 1 | PVDF |
| 7 | Bonnet Gasket | 1 | EPDM, VITON , TEFLON | 15 | Set Bolts | 1...DN15-80 3...DN100-125 4...DN150-200 | PVDF |
| 8 | Shaft | 1 | PP, PVDF | 16 | Set Pin | 1 | SUS304 1/2"~1-1/2" PVDF 2" ~ 8" |

DIMENSIONS TABLE

| Nom. Size DN (inch) | JIS | | | | | | | | | | | | | | Unit: mm | | |
|------------------------|-----|-----|-----|----|----------------------|-----|-----|-----|-----|----|----|-----|-------|----|---|--|---|
| | D1 | D2 | D3 | e | n No. of holes | D4 | D5 | D6 | L | T | A | h | H | D | Test Press (kgf/cm ²) | Working Press (kgf/cm ²) | Mini Back Pressure Rates (kgf/cm ²) |
| 25(1") | 25 | 90 | 126 | 19 | 4 | 110 | 130 | 75 | 160 | 15 | 6 | 40 | 129 | 8 | 15 | 10 | 0.34 |
| 40(1-1/2") | 41 | 105 | 151 | 19 | 4 | 125 | 145 | 85 | 180 | 18 | 8 | 45 | 141 | 8 | 15 | 10 | 0.50 |
| 50(2") | 52 | 120 | 166 | 19 | 4 | 155 | 180 | 105 | 200 | 18 | 8 | 55 | 165 | 10 | 15 | 10 | 0.50 |
| 65(2-1/2") | 80 | 140 | 187 | 19 | 4 | 181 | 205 | 130 | 260 | 20 | 9 | 70 | 180 | 12 | 15 | 10 | 0.6 |
| 80(3") | 80 | 150 | 201 | 19 | 8 | 181 | 205 | 130 | 260 | 20 | 9 | 70 | 180 | 12 | 15 | 10 | 0.6 |
| 100(4") | 100 | 175 | 232 | 19 | 8 | 235 | 265 | 170 | 300 | 24 | 10 | 90 | 216 | 16 | 10 | 7 | 0.68 |
| 125(5") | 125 | 210 | 254 | 23 | 8 | 285 | 330 | 210 | 350 | 24 | 14 | 110 | 239.5 | 18 | 10 | 7 | 0.68 |
| 150(6") | 150 | 240 | 288 | 23 | 8 | 330 | 370 | 250 | 400 | 30 | 16 | 135 | 273 | 20 | 10 | 7 | 0.84 |
| 200(8") | 200 | 290 | 348 | 23 | 12 | 390 | 425 | 300 | 500 | 30 | 18 | 170 | 310 | 20 | 10 | 7 | 0.84 |



DN25~DN200

DIMENSIONS TABLE

| ANSI | | | | | | | | | | | | | | | Unit: inch | | |
|------------------------|------|-------|-------|------|----------------------|-------|-------|-------|-------|------|------|------|-------|------|-------------------------------------|--|--------------------------------------|
| Nom. Size DN (inch) | D1 | D2 | D3 | e | n No. of holes | D4 | D5 | D6 | L | T | A | h | H | D | Test Press (lb/in ²) | Working Press (lb/in ²) | Mini Back Pressure Rates (PSI) |
| 25(1") | 1.00 | 3.13 | 4.96 | 0.63 | 4 | 4.34 | 5.13 | 2.97 | 6.31 | 0.59 | 0.24 | 1.56 | 5.07 | 0.31 | 222 | 150 | 5 |
| 40(1-1/2") | 1.63 | 3.88 | 5.94 | 0.63 | 4 | 4.94 | 5.72 | 3.34 | 7.09 | 0.70 | 0.31 | 1.78 | 5.55 | 0.31 | 222 | 150 | 7.5 |
| 50(2") | 2.06 | 4.75 | 6.54 | 0.75 | 4 | 6.09 | 7.09 | 4.13 | 7.88 | 0.70 | 0.31 | 2.16 | 6.50 | 0.41 | 222 | 150 | 7.5 |
| 65(2-1/2") | 3.15 | 5.50 | 7.36 | 0.75 | 4 | 7.13 | 8.06 | 5.13 | 10.25 | 0.79 | 0.35 | 2.75 | 7.09 | 0.47 | 222 | 150 | 8.5 |
| 80(3") | 3.15 | 6.00 | 7.91 | 0.75 | 4 | 7.13 | 8.06 | 5.13 | 10.25 | 0.79 | 0.35 | 2.75 | 7.09 | 0.47 | 222 | 150 | 8.5 |
| 100(4") | 3.94 | 7.50 | 9.13 | 0.75 | 8 | 9.25 | 10.44 | 6.69 | 11.82 | 0.94 | 0.39 | 3.53 | 8.50 | 0.63 | 222 | 150 | 10 |
| 125(5") | 4.94 | 8.50 | 10.0 | 0.88 | 8 | 11.22 | 13.00 | 8.28 | 13.78 | 0.94 | 0.55 | 4.34 | 9.43 | 0.72 | 150 | 100 | 10 |
| 150(6") | 5.90 | 9.50 | 11.33 | 0.88 | 8 | 13.00 | 14.56 | 9.84 | 15.75 | 1.18 | 0.63 | 5.31 | 10.75 | 0.78 | 150 | 100 | 12.5 |
| 200(8") | 7.88 | 11.75 | 13.70 | 0.88 | 8 | 15.31 | 16.71 | 11.81 | 19.69 | 1.18 | 0.71 | 6.69 | 12.21 | 0.78 | 150 | 100 | 12.5 |

| DIN | | | | | | | | | | | | | | | Unit: mm | | |
|------------------------|-----|-----|-----|----|----------------------|-----|-----|-----|-----|----|----|-----|-------|----|---------------------|------------------------|--------------------------------------|
| Nom. Size DN (inch) | D1 | D2 | D3 | e | n No. of holes | D4 | D5 | D6 | L | T | A | h | H | D | Test Press (bar) | Working Press (bar) | Mini Back Pressure Rates (bar) |
| 25(1") | 25 | 85 | 126 | 14 | 4 | 110 | 130 | 75 | 160 | 15 | 6 | 40 | 129 | 8 | 15 | 10 | 0.34 |
| 40(1-1/2") | 41 | 110 | 151 | 18 | 4 | 125 | 145 | 85 | 180 | 18 | 8 | 45 | 141 | 8 | 15 | 10 | 0.5 |
| 50(2") | 52 | 125 | 166 | 18 | 4 | 155 | 180 | 105 | 200 | 18 | 8 | 55 | 165 | 10 | 15 | 10 | 0.5 |
| 65(2-1/2") | 80 | 145 | 187 | 18 | 4 | 181 | 205 | 130 | 260 | 20 | 9 | 70 | 180 | 12 | 15 | 10 | 0.6 |
| 80(3") | 80 | 160 | 201 | 18 | 8 | 181 | 205 | 130 | 260 | 20 | 9 | 70 | 180 | 12 | 15 | 10 | 0.6 |
| 100(4") | 100 | 180 | 232 | 18 | 8 | 235 | 265 | 170 | 300 | 24 | 10 | 90 | 216 | 16 | 15 | 10 | 0.68 |
| 125(5") | 125 | 210 | 254 | 18 | 8 | 285 | 330 | 210 | 350 | 24 | 14 | 110 | 239.5 | 18 | 10 | 7 | 0.68 |
| 150(6") | 150 | 240 | 288 | 23 | 8 | 330 | 370 | 250 | 400 | 30 | 16 | 135 | 273 | 20 | 10 | 7 | 0.84 |
| 200(8") | 200 | 295 | 348 | 23 | 8 | 390 | 425 | 300 | 500 | 30 | 18 | 170 | 310 | 20 | 10 | 7 | 0.84 |

The dimension table is calculated based on PVC material.
 ✘ The valve of test pressure is calculated based on PVC PVDF materials.
 The valve of test pressure for PP material is 70% based on the table.
 The flanged length tolerance is according to EN558-1:1995.